

**Instructions**  
**for**  
**Installing a**  
**RS FAB**  
**BigShot**  
**Shifter**



**Step #1**

**Remove the gear shift knob.**



## **Step #2**

**Carefully remove boot.**



### **Step #3**

**Remove bolts (19mm) retaining the clam shell.**



## **Step #4**

**Drop the clamshell to gain access to lower box for shifter. Remove tire for additional working room.**



### **Step #5**

**Remove the 4 nuts (10mm) retaining the shifter assembly to the lower shifter box.**

**CAUTION: The lower box will come free of the shifter assembly. Be aware when working underneath.**



## **Step #6**

**Once the lower shifter box is removed, you will see the connection of the shifter to the shifter linkage rods.**



### **Step #7**

**You will need a 13mm and 10mm sockets or box end wrenches. Loosen and remove the lower bolt connecting the linkage rod to the shifter.**





## **Step #8**

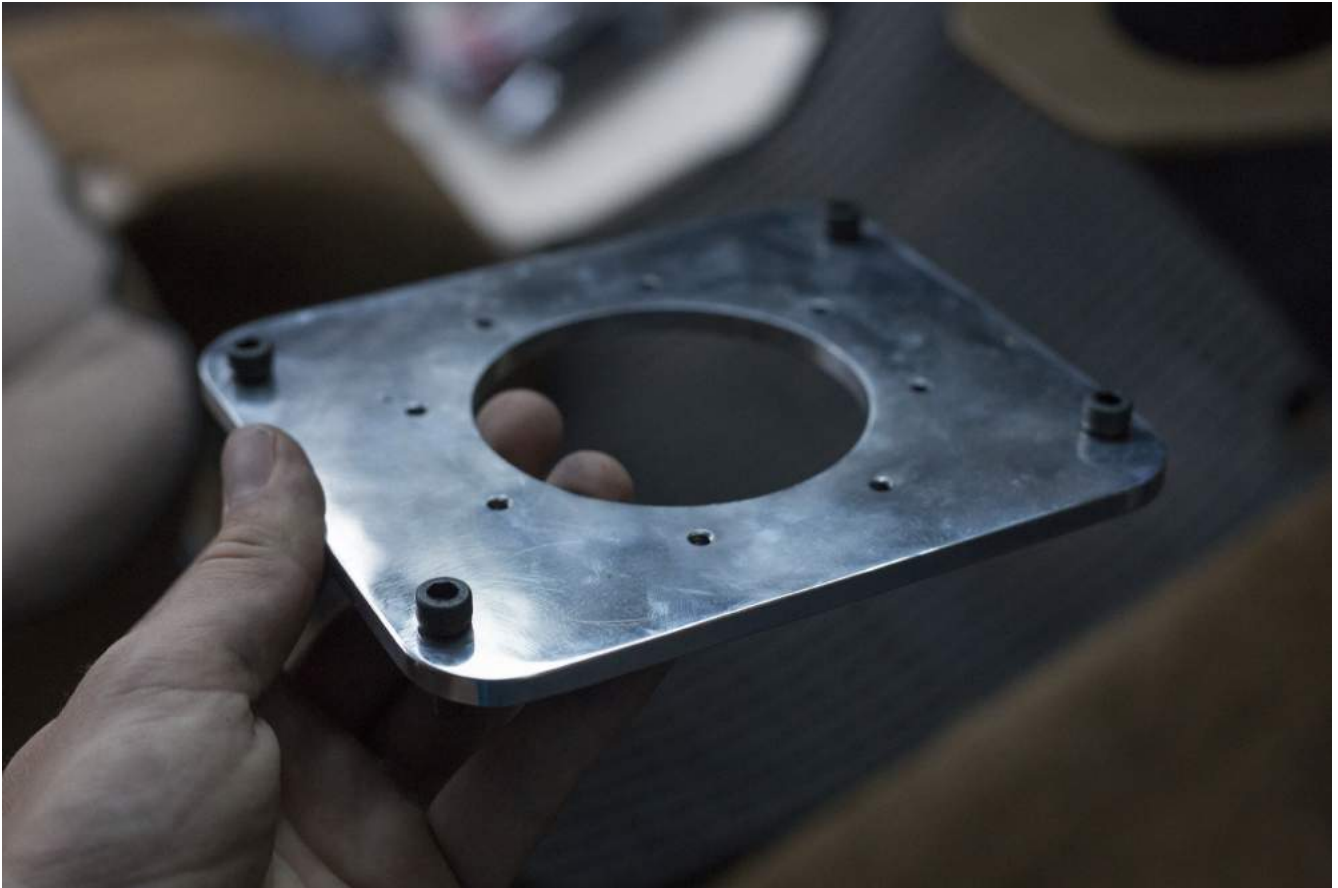
**Once the bolt is removed, be careful not to loose the two small plastic bushings on the end of the shifter assembly. You will need these during re-assembly.**

**Note of advice: Grab a rag and remove old grease and debris from shifter assembly before removal.**



## **Step #9**

**Carefully lift the shifter assembly from underneath the carpet, being careful not to wipe dirt and grease on the interior, hence the note of advice in Step #8.**



## **Step #10**

**Install the 4 black Allen bolts snug from the topside down.**



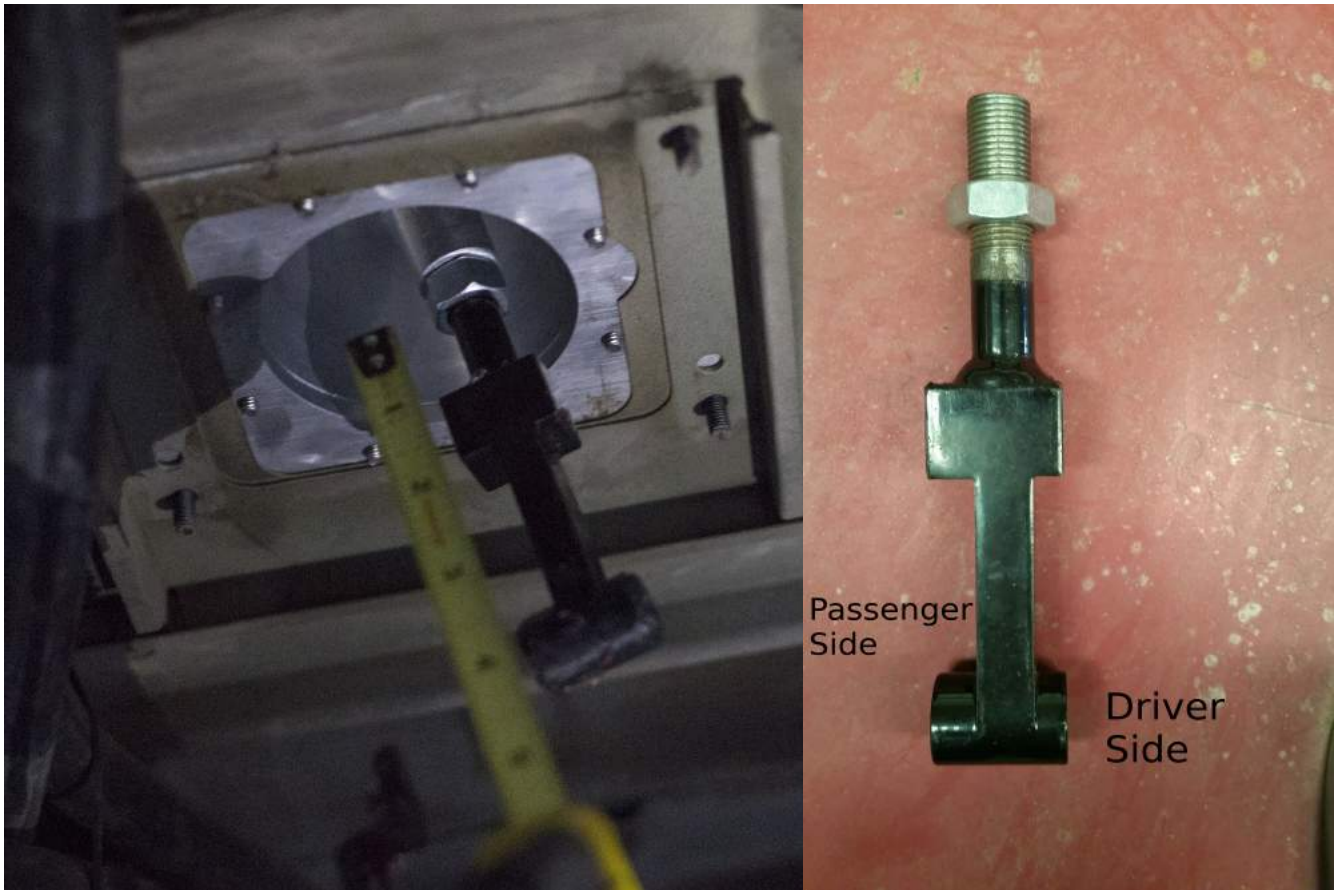
## **Step #11**

**Attach the BigShot shifter to the included plate.**



## **Step #12**

**Remove the plastic bushings from the stock shifter and install them into the lower adapter.**



### Step #13

**From bottom of new plate to center of lower bolt is approximately 4". Rotate clockwise or counter clockwise to get the desired length. Point To Mention: Pay attention to the offset at the bottom of the adapter. See picture to double check the offset.**



## **Step #14**

**The handle of the BigShot shifter can be clocked in any position you like to match your driving style. Once you have reached the desired angle, this is where it is best to have a second set of hands. Have someone sit in the drivers seat holding the shifter in the position you like. Then while underneath, tighten down the lower nut securely.**

## **Step #15**

**Reattach the lower shifter box, spare tire, and clamshell in reverse order.**